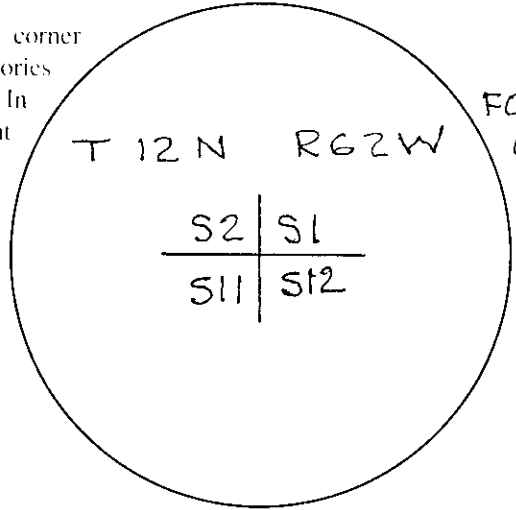


# Wyoming Certified Land Corner Recordation Certificate

*This form is to be completed in accordance with W.S. 36-11-101, printed in black ink or typed, and shall be for one individual corner.*

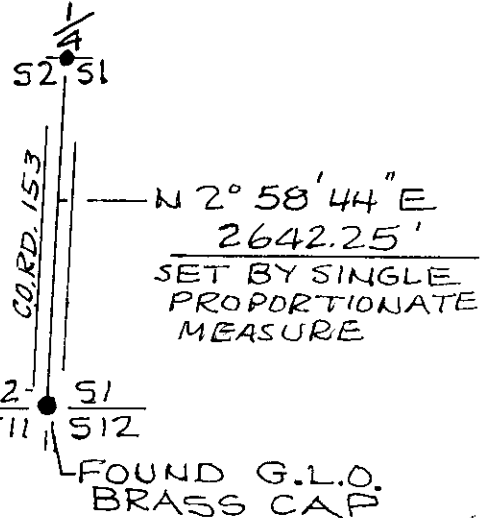
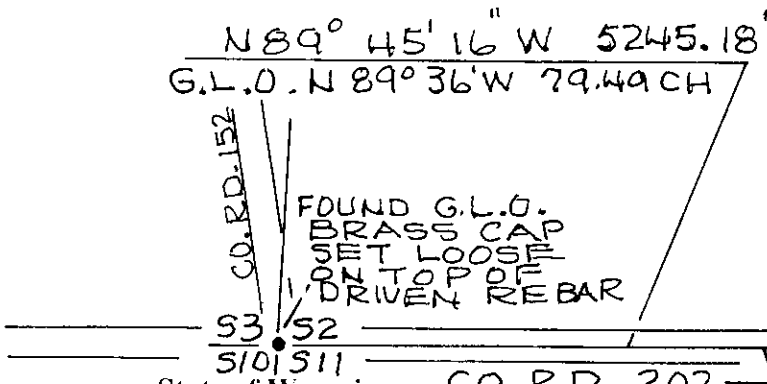
Describe below, or show in sketch attached to this form, the corner evidence found. Include condition and type of monument, accessories and ties. Describe any maintenance or rehabilitation performed. In the circle to the right, show monument inscription. If monument is determined lost or obliterated, restate the G.L.O. or BLM original field note record; describe or show the procedure used to reestablish the corner and all data as above for a found monument.



Field Date FEB-JUN 1993 Office Reference \_\_\_\_\_

**G.L.O. REFERENCE:**  
**RETRACEMENT OF THE**  
**SUBDIVISIONAL LINES OF**  
**Tp. 12 N., Rg. 68 W., WYOMING**  
**PAGE 707**

**Monument Inscription**



State of Wyoming  
 Office of County Clerk  
 County of \_\_\_\_\_

This Certified Land Corner Recordation Certificate was filed for record on the \_\_\_\_\_ day of \_\_\_\_\_, 19 \_\_\_\_, in Book No. T 44, R 62, on Alpha-Numeric coordinates E-21 and was noted on the Cross Index Plat.

\_\_\_\_\_  
 County Clerk

Corner Type:  Aliquot Corner     Other    Section(s) \_\_\_\_\_ Meridian \_\_\_\_\_  
 Corner Name 1-2-11-12    Township 12 N    Range 62 W    Page \_\_\_\_\_

Sheet \_\_\_\_\_ of \_\_\_\_\_

FILED  
 2017 MAR 23 PM 2 04  
 LARAMIE COUNTY  
 CHEYENNE, WY.  
 138685

Sheet \_\_\_\_\_ of \_\_\_\_\_

Signature, Seal, and Date

*William B. Armstrong*  
 3/22/94  
 Professional Engineer (Civil)  
 WILLIAM B. ARMSTRONG

I, WILLIAM B. ARMSTRONG, Wyoming PLS/PE 3153 certify that I, or others under my supervision, have performed the work as described above and completed this form.  
 Company or Agency: ARMSTRONG ENGINEERING SERVICES  
 Mailing Address: 915 E. CARLSON  
 Street Address: 915 E. CARLSON  
 City, State, ZIP: CHEYENNE, WY, 82009  
 Telephone, FAX: (307) 632-2559

**Certification**

Latitude \_\_\_\_\_ North (Y) = \_\_\_\_\_ East (X) = \_\_\_\_\_  
 Scale Factor \_\_\_\_\_ Longitude \_\_\_\_\_ Geoid Height \_\_\_\_\_  
 Zone \_\_\_\_\_  NAD 1927  NGVD 1929  NAD 1983  NAVD 1988  
 feet/meters

**State Plane Coordinates (optional)**

1	2	3	4	5	6	7	8	9	10	11	12	13	14	15	16	17	18	19	20	21	22	23	24	25	
A	6	5	4	3	2	1																			
B																									
C																									
D																									
E																									
F																									
G																									
H																									
J																									
K																									
L																									
M																									
N																									
O																									
P																									
R																									
S																									
T																									
U																									
V																									
W																									
X																									
Y																									
Z																									

**Cross Index Plat**

**Directions for using the Cross Index Plat**

Section, quarter and sixteenth corners will be marked with a dot at the corner location. The alpha-numeric coordinate number is then determined for the intersection of the two lines. A corner that applies to two or more townships shall be filed under all that apply by the use of photo copies.  
 Closing corners will be indexed under the township in which they control ownership. For 1/64, 1/256, 1/1024 and non-aliquot corners lying between grid designations, mark the appropriate grid area with a dot and use the index code to the north and west (local systems may be used if the method is approved by the County Surveyor or Clerk and a written description of its use is filed in the front of each book of certificates).